



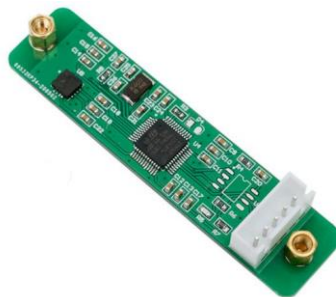
TILT AND INCLINOEMTER



www.memsmag.com

T7-A INDUSTRIAL GRADE

Tilt and Inclinator Sensor



Measuring Range.....	±10/±30/±60/±90°
Measuring Axis.....	X, Y
Accuracy (full temperature).....	0.3°
Zero Temperature Drift (full temperature).....	±0.05°/°C
Resolution.....	0.05°
Impact Resistance.....	2500g,0.5ms,3 times/axis
Anti-Vibration.....	10grms,10~1000Hz
Communication Protocol.....	Rs232/Rs485/Rs422/TTL/PWM/ CAN/Modbus
Output Signal.....	Digital
Pack and Size.....	Board, 68*16*8mm
Weight.....	7g

T7-B INDUSTRIAL GRADE

Tilt and Inclinometer Sensor



Measuring Range.....	±90/±180/±270/±360°
Measuring Axis.....	X, Y
Accuracy (full temperature).....	0.1°
Zero Temperature Drift (full temperature).....	±0.01°/°C
Resolution.....	0.1°
Impact Resistance.....	2500g,0.5ms,3 times/axis
Anti-Vibration.....	10grms,10~1000Hz
Communication Protocol.....	Rs232/Rs485/TTL
Output Signal.....	Digital
Pack and Size.....	Shell, 51.5*36*20mm
Weight.....	35g



T7-C INDUSTRIAL GRADE

Tilt and Inclinator Sensor



Measuring Range.....	±10/±30/±60/±90°
Measuring Axis.....	X, Y
Accuracy (full temperature).....	0.3°
Zero Temperature Drift (full temperature).....	±0.05°/°C
Resolution.....	0.05°
Impact Resistance.....	2500g,0.5ms,3 times/axis
Anti-Vibration.....	10grms,10~1000Hz
Communication Protocol.....	Rs232/RS485/RS422/TTL/PWM/ CAN/Modbus
Output Signal.....	Digital
Pack and Size.....	Shell, 55*37*24mm
Weight.....	55g

T70-A INDUSTRIAL GRADE

Tilt and Inclinometer Sensor



Measuring Range.....	$\pm 90/\pm 180^\circ$
Measuring Axis.....	X, Y
Accuracy (full temperature).....	0.2~0.3°
Scale Factor of Temperature Coefficient (full temperature).....	200ppm/°C
Resolution.....	0.1°
Impact Resistance.....	2450g, 0.5ms, 3 times/axis
Anti-Vibration.....	10grms, 10~1000Hz
Communication Protocol.....	Rs232/Rs485/Rs422/TTL/CAN/Modbus
Output Signal.....	Digital
Pack and Size.....	Shell, 81*40*40mm
Weight.....	30g



T70-B INDUSTRIAL GRADE

Tilt and Inclinator Sensor



Measuring Range.....	±90/±180°
Measuring Axis.....	X, Y
Accuracy (full temperature).....	0.01~0.3°
Zero Temperature Drift (full temperature).....	±0.002/±0.01/±0.05°/°C
Resolution.....	0.002~0.05°
Impact Resistance.....	20000g,0.5ms,3 times/axis
Anti-Vibration.....	10grms,10~1000Hz
Communication Protocol.....	Rs232/Rs485/Rs422/TTL/CAN/Modbus
Output Signal.....	Digital/Analog (current/voltage)
Pack and Size.....	Shell, 81.5*48*40mm
Weight.....	185g

T70-C INDUSTRIAL GRADE

Tilt and Inclinator Sensor



Measuring Range.....	±10/±30/±60/±90°
Measuring Axis.....	X or Y
Accuracy (full temperature).....	0.1°
Zero Temperature Drift (full temperature).....	±0.01°/°C
Resolution.....	0.01°
Impact Resistance.....	3500g,0.5ms,3 times/axis
Anti-Vibration.....	10grms,10~1000Hz
Communication Protocol.....	Rs232/Rs485/Rs422/TTL/CAN/Modbus
Output Signal.....	Analog (current)
Pack and Size.....	Shell, 90*40*27mm
Weight.....	145g



T70-D INDUSTRIAL GRADE

Tilt Switch and Relay Sensor



Measuring Range.....	±180°
Measuring Axis.....	X or Y
Accuracy (full temperature).....	0.1°
Resolution.....	0.01°
Impact Resistance.....	3500g,0.5ms,3 times/axis
Anti-Vibration.....	10grms,10~1000Hz
Communication Protocol.....	Relay/Rs232/Rs485/TTL
Output Signal.....	Digital
Pack and Size.....	Shell, 90*40*27mm/Board, 46*35*8mm
Weight.....	Shell, 145g/Board, 45g

T70-E INDUSTRIAL GRADE

Tilt Switch and Relay Sensor



Measuring Range.....	±90°
Measuring Axis.....	X, Y
Accuracy (full temperature).....	0.1°
Resolution.....	0.01°
Impact Resistance.....	3500g,0.5ms,3 times/axis
Anti-Vibration.....	10grms,10~1000Hz
Communication Protocol.....	Relay/Rs232/Rs485/TTL/Modbus
Output Signal.....	Digital
Pack and Size.....	Shell, 90*40*27mm
Weight.....	150g

T70-F INDUSTRIAL GRADE

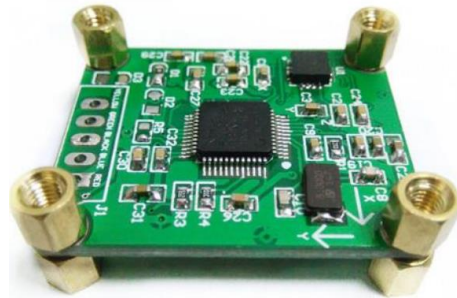
Tilt Switch and Relay Sensor



Measuring Range.....	±90°
Measuring Axis.....	X, Y/Z
Accuracy (full temperature).....	0.01°
Resolution.....	0.002°
Impact Resistance.....	20000g,0.5ms,3 times/axis
Anti-Vibration.....	10grms,10~1000Hz
Communication Protocol.....	Relay/Rs232/Rs485/TTL/Modbus
Output Signal.....	Digital/Analog (voltage)
Pack and Size.....	Shell, 78*44*28mm
Weight.....	130g

T70-G INDUSTRIAL GRADE

Tilt and Inclinometer Sensor



Measuring Range.....	±10/±30/±60/±90°
Measuring Axis.....	X, Y
Accuracy (full temperature).....	0.3°
Zero Temperature Drift (full temperature).....	±0.05°/°C
Resolution.....	0.05°
Impact Resistance.....	2500g,0.5ms,3 times/axis
Anti-Vibration.....	10grms,10~1000Hz
Communication Protocol.....	Rs232/Rs485/Rs422/TTL/CAN/Modbus
Output Signal.....	Digital
Pack and Size.....	Board, 33*27*8mm
Weight.....	6g

T70-H INDUSTRIAL GRADE

Tilt and Inclinator Sensor



Measuring Range.....	±90°
Measuring Axis.....	X, Y
Accuracy (full temperature).....	0.1°
Zero Temperature Drift (full temperature).....	±0.05°/°C
Resolution.....	0.1°
Impact Resistance.....	2600g,0.5ms,3 times/axis
Anti-Vibration.....	10grms,10~1000Hz
Communication Protocol.....	Rs232/Rs485/Rs422/TTL/CAN/Modbus
Output Signal.....	Digital
Pack and Size.....	Shell, 55*37*24mm
Weight.....	55g

T70-J/K INDUSTRIAL GRADE

Tilt Switch and Relay Sensor



Measuring Range.....	±90°
Measuring Axis.....	X, Y
Accuracy (full temperature).....	0.2°
Resolution.....	0.02°
Impact Resistance.....	2450g,0.5ms,3 times/axis
Anti-Vibration.....	10grms,10~1000Hz
Communication Protocol.....	Relay/Rs232/Rs485/TTL/Modbus
Output Signal.....	Digital/Analog (voltage)
Pack and Size.....	Shell, 70*40*40mm
Weight.....	110g

T700-A INDUSTRIAL GRADE

Tilt and Inclinator Sensor



Measuring Range.....	±10/±30/±60/±90°
Measuring Axis.....	X, Y
Accuracy (full temperature).....	0.01~0.05°
Zero Temperature Drift (full temperature).....	±0.008°/°C
Resolution.....	0.001°
Impact Resistance.....	20000g,0.5ms,3 times/axis
Anti-Vibration.....	10grms,10~1000Hz
Communication Protocol.....	Rs232/RS485/RS422/TTL/CAN/Modbus
Output Signal.....	Digital
Pack and Size.....	Shell, 90*40*27mm
Weight.....	150g

T700-B/C INDUSTRIAL GRADE

Tilt and Inclinometer Sensor

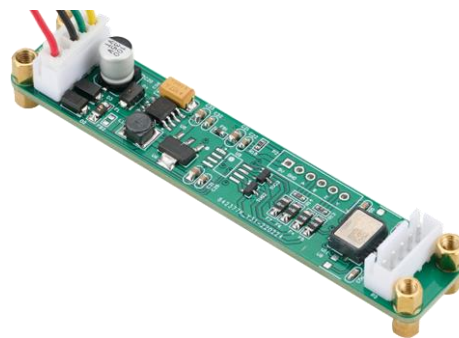


Measuring Range.....	$\pm 10/\pm 30/\pm 60/\pm 90^\circ$
Measuring Axis.....	X, Y, Z
Accuracy (full temperature).....	0.01~0.05°
Zero Temperature Drift (full temperature).....	$\pm 0.001^\circ/\text{C}$
Resolution.....	0.005°
Impact Resistance.....	20000g, 0.5ms, 3 times/axis
Anti-Vibration.....	10grms, 10~1000Hz
Communication Protocol.....	Rs232/Rs485/Rs422/TTL/CAN/Modbus
Output Signal.....	Digital
Pack and Size.....	Board, 46*35*8mm
Weight.....	10g



T700-D INDUSTRIAL GRADE

Tilt and Inclinator Sensor



Measuring Range.....	±10/±30/±90/±180°
Measuring Axis.....	X, Y, Z
Accuracy (full temperature).....	0.01~0.05°
Zero Temperature Drift (full temperature).....	±0.001°/°C
Resolution.....	0.002°
Impact Resistance.....	20000g,0.5ms,3 times/axis
Anti-Vibration.....	10grms,10~1000Hz
Communication Protocol.....	Rs232/Rs485/Rs422/TTL/CAN/Modbus
Output Signal.....	Digital
Pack and Size.....	Board, 92*18*16mm
Weight.....	10g

T700-E/F INDUSTRIAL GRADE

Tilt and Inclinometer Sensor



Measuring Range.....	$\pm 10/\pm 30/\pm 60/\pm 90^\circ$
Measuring Axis.....	X, Y
Accuracy (full temperature).....	0.01~0.05°
Zero Temperature Drift (full temperature).....	$\pm 0.002^\circ/\text{C}$
Resolution.....	0.001~0.002°
Impact Resistance.....	20000g, 0.5ms, 3 times/axis
Anti-Vibration.....	10grms, 10~1000Hz
Communication Protocol.....	Rs232/Rs485
Output Signal.....	Analog (voltage/current)
Pack and Size.....	Shell, 90*40*27mm
Weight.....	150g



T700-G/H INDUSTRIAL GRADE

Tilt and Inclination Sensor



Measuring Range.....	±10/±30/±90/±180°
Measuring Axis.....	X, Y
Accuracy (full temperature).....	0.01~0.05°
Zero Temperature Drift (full temperature).....	±0.001°/°C
Resolution.....	0.005°
Impact Resistance.....	20000g,0.5ms,3 times/axis
Anti-Vibration.....	10grms,10~1000Hz
Communication Protocol.....	Rs232/Rs485/Rs422/TTL/CAN/Modbus
Output Signal.....	Digital
Pack and Size.....	Board, 92*18*16mm
Weight.....	10g

T700-I INDUSTRIAL GRADE

Tilt and Inclinator Sensor



Measuring Range.....	±10/±30/±60/±90°
Measuring Axis.....	X, Y, Z
Accuracy (full temperature).....	0.01~0.05°
Zero Temperature Drift (full temperature).....	±0.008°/°C
Resolution.....	0.001°
Impact Resistance.....	20000g,0.5ms,3 times/axis
Anti-Vibration.....	10grms,10~1000Hz
Communication Protocol.....	Rs232/Rs485/Rs422/TTL/CAN/Modbus
Output Signal.....	Digital
Pack and Size.....	Shell, 125*22*28mm
Weight.....	150g



T7000-A/F INDUSTRIAL GRADE

Tilt and Inclinator Sensor



Measuring Range.....	±5/±10/±15/±30°
Measuring Axis.....	X, Y
Accuracy (full temperature).....	0.005~0.007°
Zero Temperature Drift (full temperature).....	±0.0007°/°C
Resolution.....	0.0007°
Impact Resistance.....	20000g,0.5ms,3 times/axis
Anti-Vibration.....	10grms,10~1000Hz
Communication Protocol.....	Rs232/RS485
Output Signal.....	Analog (current/voltage)
Pack and Size.....	Shell, 107*55.5*27mm
Weight.....	250g



T7000-B/E INDUSTRIAL GRADE

Tilt and Inclinator Sensor



Measuring Range.....	±180°
Measuring Axis.....	X or Y
Accuracy (full temperature).....	0.008°
Zero Temperature Drift (full temperature).....	±0.001°/°C
Resolution.....	0.001°
Impact Resistance.....	10000g,0.5ms,3 times/axis
Anti-Vibration.....	10grms,10~1000Hz
Communication Protocol.....	Rs232/Rs485
Output Signal.....	Analog (current/voltage)
Pack and Size.....	Shell, 78*44*28mm
Weight.....	150g



T7000-C/D INDUSTRIAL GRADE

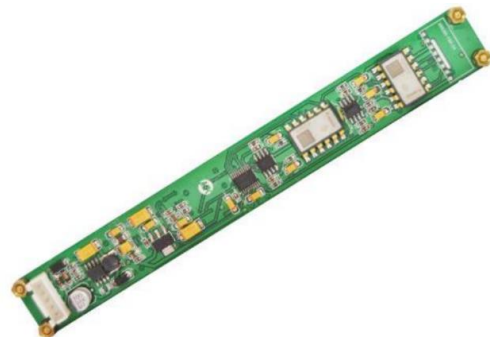
Tilt and Inclinator Sensor



Measuring Range.....	±90°
Measuring Axis.....	X, Y
Accuracy (full temperature).....	0.008°
Zero Temperature Drift (full temperature).....	±0.001°/°C
Resolution.....	0.001°
Impact Resistance.....	10000g,0.5ms,3 times/axis
Anti-Vibration.....	10grms,10~1000Hz
Communication Protocol.....	Rs232/Rs485
Output Signal.....	Analog (current/voltage)
Pack and Size.....	Shell, 78*44*28mm
Weight.....	150g

T7000-G/H INDUSTRIAL GRADE

Tilt and Inclinator Sensor



Measuring Range.....	±5/±10/±15/±30°
Measuring Axis.....	X, Y
Accuracy (full temperature).....	0.001~0.005°
Zero Temperature Drift (full temperature).....	±0.0005°/°C
Resolution.....	0.0005°
Impact Resistance.....	20000g,0.5ms,3 times/axis
Anti-Vibration.....	10grms,10~1000Hz
Communication Protocol.....	Rs232/Rs485/Rs422/TTL/CAN/Modbus
Output Signal.....	Digital
Pack and Size.....	Board, 160*20*20mm/Shell, 175*27*27mm
Weight.....	Board, 20g/Shell, 255g



T7000-I INDUSTRIAL GRADE

Tilt and Inclinator Sensor (Wireless)



Measuring Range.....	±30°
Measuring Axis.....	X, Y
Accuracy (full temperature).....	0.001°
Zero Temperature Drift (full temperature).....	±0.0005°/°C
Resolution.....	0.0005°
Impact Resistance.....	2500g,0.5ms,3 times/axis
Anti-Vibration.....	10grms,10~1000Hz
Communication Protocol.....	Bluetooth/Zigbee
Output Signal.....	Digital
Pack and Size.....	Shell, 94*74*64mm
Weight.....	475g

T7000-K INDUSTRIAL GRADE

Tilt and Inclinator Sensor (Wireless)



Measuring Range.....	$\pm 10/\pm 30/\pm 60/\pm 90^\circ$
Measuring Axis.....	X, Y
Accuracy (full temperature).....	0.1°
Zero Temperature Drift (full temperature).....	$\pm 0.01^\circ/\text{C}$
Resolution.....	0.01°
Impact Resistance.....	3500g, 0.5ms, 3 times/axis
Anti-Vibration.....	10grms, 10~1000Hz
Communication Protocol.....	Bluetooth/Zigbee
Output Signal.....	Digital
Pack and Size.....	Shell, 107*55.5*27mm
Weight.....	280g

G800-B/G801-B INDUSTRIAL GRADE

Angle Sensor



Measuring Range.....	0~90/0~180/0~270/0~360°
Measuring Axis.....	X, Y
Accuracy (full temperature).....	0.2~0.6°
Zero Temperature Drift (full temperature).....	±0.003°/°C
Resolution.....	0.02°
Impact Resistance.....	20000g,0.5ms,3 times/axis
Anti-Vibration.....	10grms,2~2000Hz
Communication Protocol.....	Rs232/Rs485/CAN
Output Signal.....	Digital/Analog (current)
Pack and Size.....	Shell, Φ38*55mm/Φ38*58mm
Weight.....	120g

G-802/G803 INDUSTRIAL GRADE

Tilt Switch and Relay Sensor



Measuring Range.....	0~90/0~180/0~270/0~360°
Measuring Axis.....	X, Y
Accuracy (full temperature).....	0.3~1°
Zero Temperature Drift (full temperature).....	±0.02°/°C
Resolution.....	0.05°
Impact Resistance.....	20000g,0.5ms,3 times/axis
Anti-Vibration.....	10grms,2~2000Hz
Communication Protocol.....	Rs232/Rs485/CAN
Output Signal.....	Digital/Analog (current)
Pack and Size.....	Shell, Φ38*55mm/Φ38*58mm
Weight.....	120g





G810 INDUSTRIAL GRADE

Angle Sensor



Measuring Range.....	0~90/0~180/0~270/0~360°
Measuring Axis.....	X, Y
Accuracy (full temperature).....	0.1~0.5°
Zero Temperature Drift (full temperature).....	±0.01°/°C
Resolution.....	0.01°
Impact Resistance.....	20000g,0.5ms,3 times/axis
Anti-Vibration.....	10grms,2~2000Hz
Communication Protocol.....	Rs232/RS485/CAN
Output Signal.....	Digital/Analog (current)
Pack and Size.....	Shell, Φ52*58mm
Weight.....	180g



The Leader in China Inertial Sensor Market



Unmanned Aerial
Vehicles



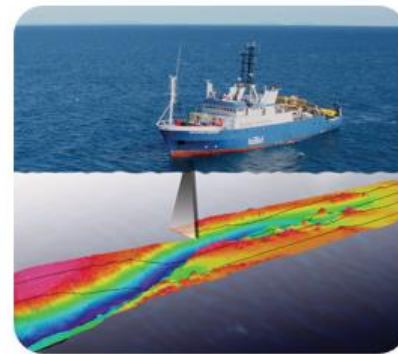
Satellites



Autonomous Vehicles



Remotely Operated
Underwater Vehicles



Maritime Echosounder
Application



Petroleum Extraction
and Exploration